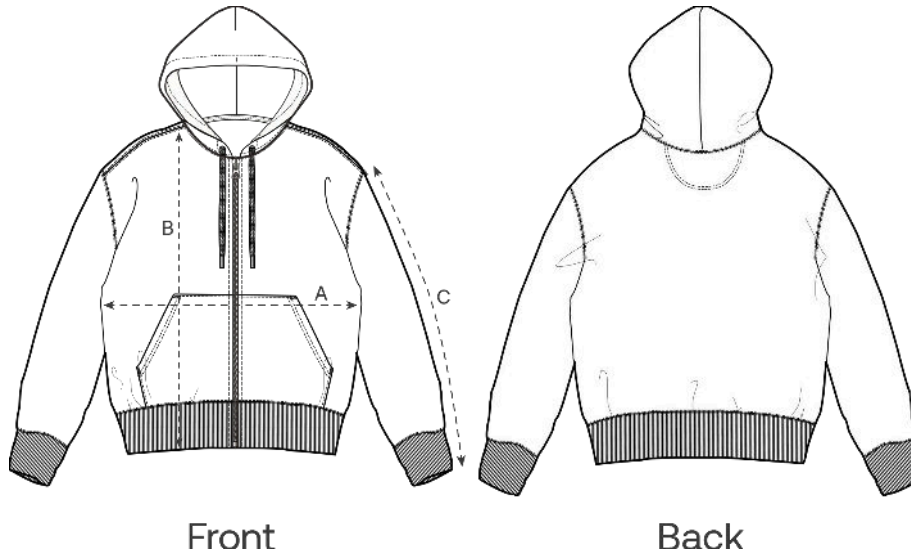


Size Guide



| Measurement in cm | XXS | XS | S | M | L | XL | XXL | 3XL | 4XL | 5XL |
|-------------------|------|------|------|------|------|----|------|------|------|------|
| A - Half Chest | 51 | 53 | 55 | 59 | 62 | 65 | 69 | 73 | 78 | 81 |
| B - Body Length | 64 | 67 | 71 | 74 | 76 | 78 | 80 | 82 | 84 | 85 |
| C - Sleeve Length | 58.5 | 60.5 | 64.5 | 66.5 | 68.5 | 69 | 69.5 | 69.5 | 69.5 | 69.5 |

Packing

| Sizes | XXS | XS | S | M | L | XL | XXL | 3XL | 4XL | 5XL |
|--------------|-----|----|----|----|----|----|-----|-----|-----|-----|
| Pieces / bag | 5 | 5 | 5 | 5 | 5 | 5 | 5 | 5 | 5 | 5 |
| Pieces / box | 10 | 20 | 20 | 20 | 20 | 20 | 20 | 10 | 10 | 10 |

Environmental impact

Please note that the table below shows data for an adult in size M.

| Carbon emission in Kg CO ₂ eq | Natural Raw | Eco-heather | Whites & Colours | Heathers* |
|--|-------------|-------------|------------------|-----------|
| From cradle to gate ¹ | 6.98 | - | 8.79 | 9.0 |
| From cradle to grave ² | 11.1 | - | 12.9 | 13.1 |

| Water usage in m ³ | Natural Raw | Eco-heather | Whites & Colours | Heathers* |
|-----------------------------------|-------------|-------------|------------------|-----------|
| From cradle to gate ¹ | 2.73 | - | 4.56 | 4.86 |
| From cradle to grave ² | 4.93 | - | 6.76 | 7.06 |

1 - From the extraction of raw materials to the point it leaves the manufacturer. 2 - From the extraction of raw materials to the product end-of-life. * Except Heather Haze



The unisex Iconic zip-through hoodie

Medium Fit

XXS → 5XL*

350 GSM

Description

- Double-layered hood in self-fabric
- Round drawcord in matching colour with closed-end metal tipping
- Metal eyelets
- Herringbone back neck tape
- Self-fabric half-moon at back neck
- Exposed metal zip at centre front
- Set-in sleeves
- Kangaroo pocket
- 1x1 rib at sleeve cuffs and hem
- Twin-needle topstitching at armholes, sleeve cuffs and hem

Composition

- Shell - Brushed
- 100% Cotton - Organic Ring Spun Combed - 350.0 GSM
- Fabric washed

Care instruction

Wash similar colours together, no ironing on print, wash and iron inside out.



Country of origin

- Weaving : Bangladesh
- Dyeing : Bangladesh
- Assembly : Bangladesh